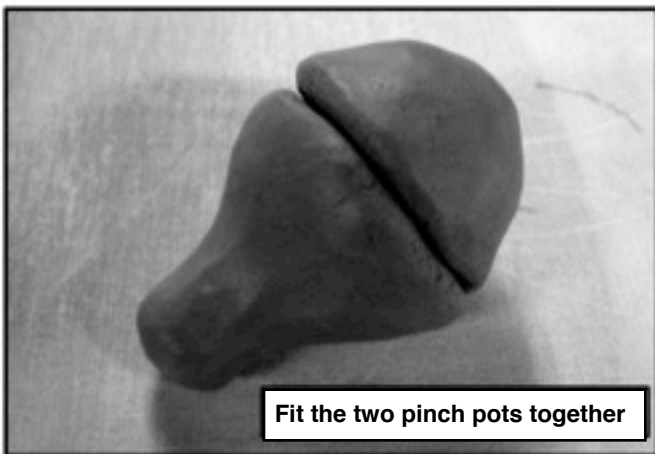
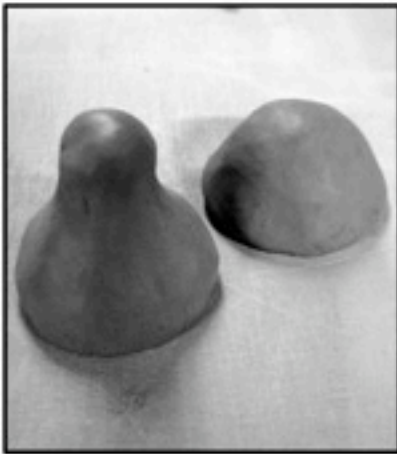
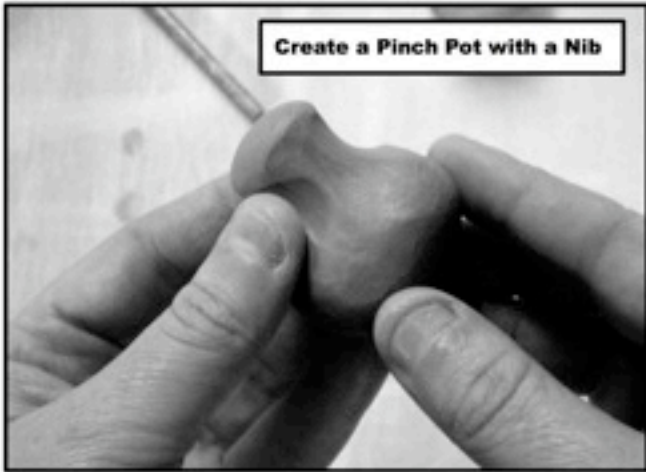
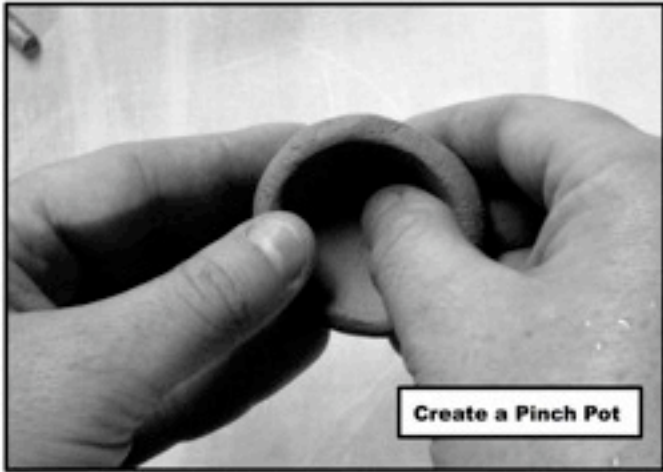
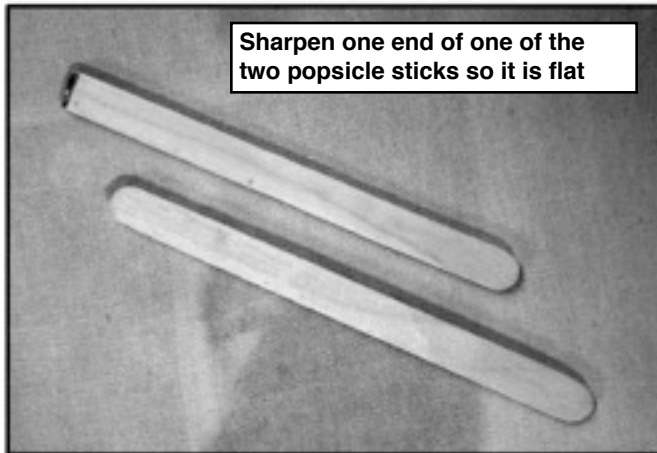


# Creating a Clay Whistle





**Creating the Whistle Mechanism**

- 1. Push Popsicle Stick through the Nib**
- 2. Create a square with the sharpened popsicle stick**
- 3. Remove the clay from the square**
- 4. Create a Second Square right next to the one you just cleaned out**
- 5. Remove half the clay from the second hole at a 45 degree angle**
- 6. Clean out any extra clay from the opening**

